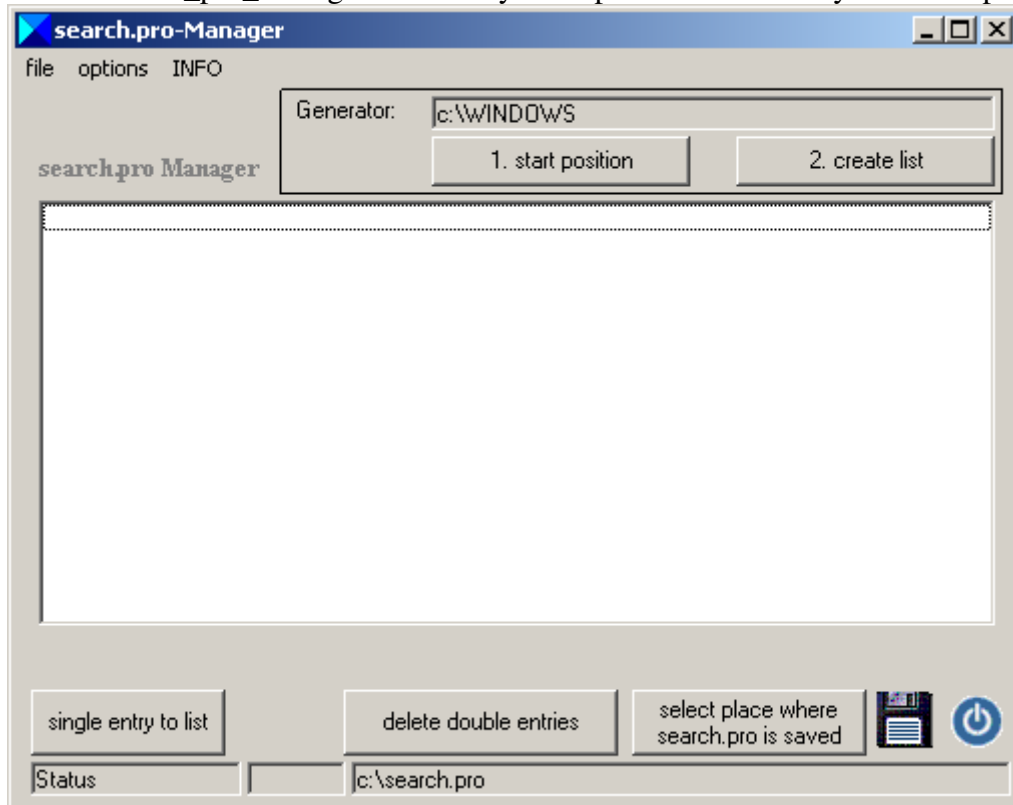
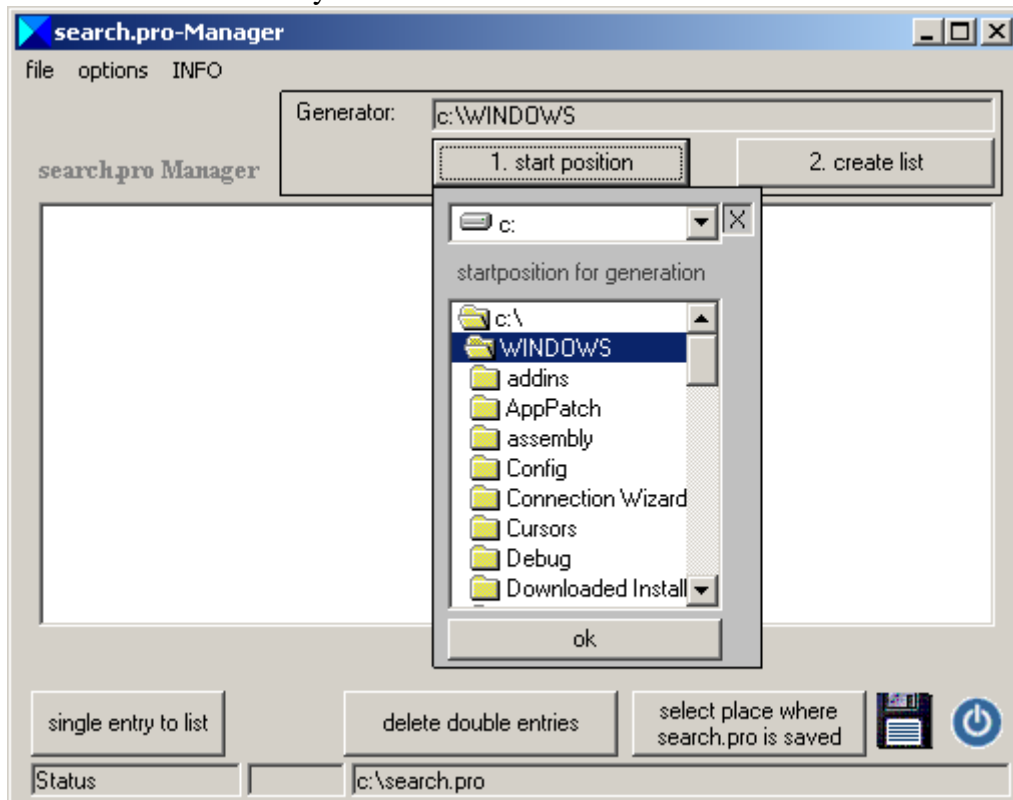


1. start search_pro_manager.exe from your explorer or a link on your desktop.

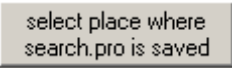


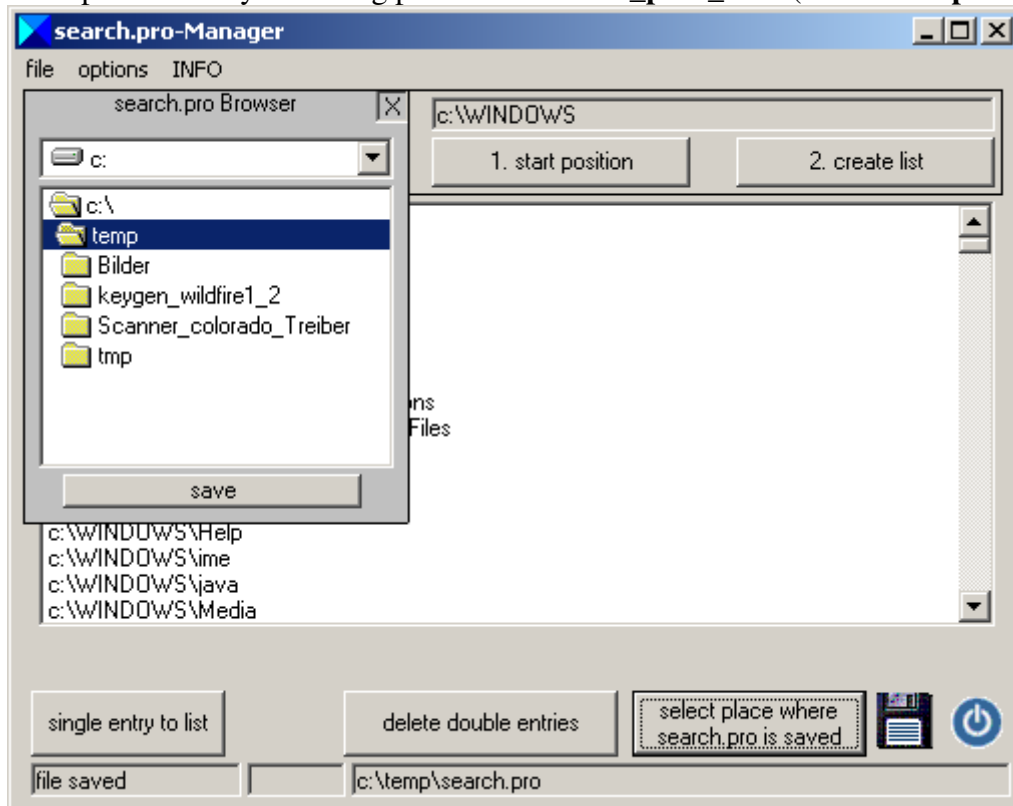
2. click on to determine the point all your directories and subdirectories are.

3. choose a start directory and click "ok"

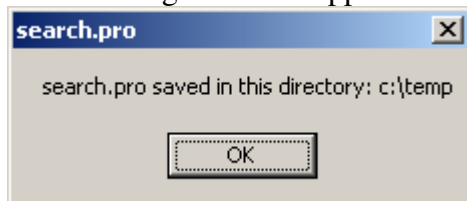


4. click on  and the program begins to work.

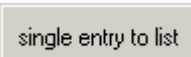
5. click on  and choose where your search.pro is saved. This should be the same path than in your config.pro behind **search_path_file** . (It is **C:\temp** in this example)

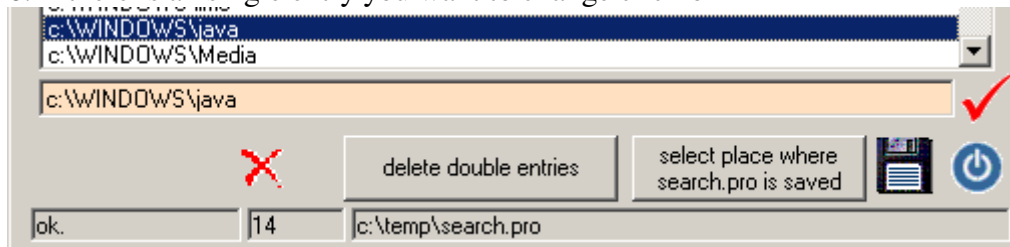



and a message box will appear




then you can save the file by a mouse click on 

6. if there is an single entry you want to change click on 



click on the  if you finished your changings.

7. to delete select the entries you want to erase and click on .

8. leave the program with 